

## STEP 1

### LEVEL THE TRACK

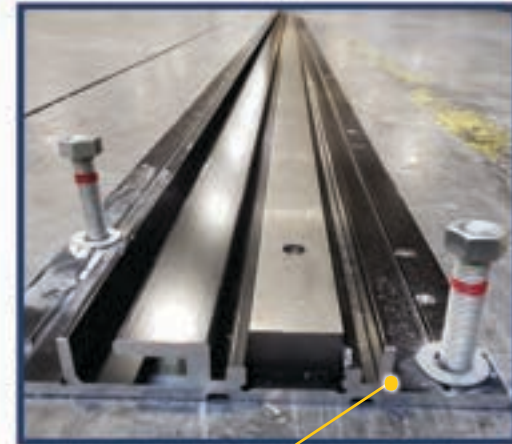
- Trained Professionals Required
- Requires the longest time
- Level to 1/16" or better



## STEP 2

### LEVEL THE TRACK FACE

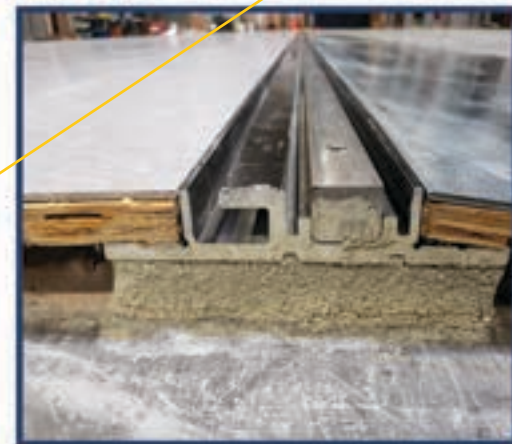
- Reduces noise & wheel wear
- Helps distribute weight & prevents carriage drift
- Seismic Tracks added in Seismic Zones



## STEP 3

### CONCRETE ANCHORS

- All tracks are anchored per building codes
- Grout is required under all tracks - this prevents track from becoming unlevel & allows for even spread of weight loads



## STEP 4

### WOOD DECKS + T-NUTS

- Wood Decks are cut & anchored to fit the tracks & to create barrier-free floor for walking & carts
- Steel T-Nuts are used to level wood



## STEP 5

### COMPLETE FLOORING

- Wood Decking is scribed into the tracks & secured to the floor
- Customer adds carpet or tile to create the finished look
- ADA REQUIRED Slope is added



## STEP 6

### ADD CARRIAGES

- End-Panels are added
- Chains adjusted w/ chain tensioner
- Hand-Cranks are added: 3-spoke rotating SafeCrank handles with soft-touch knobs & an aisle safety button



## STEP 7

### ADD SHELVING

- Add Shelving to Carriages
- Systems are designed to accommodate any shelving system
- Shelving can be configured in many ways and customized to fit your needs



## STEP 8

### ADD SIGNAGE & EDUCATE

- End-Panel design to enhance look
- Clean up the area
- Train customer on the use of lock & safety features

